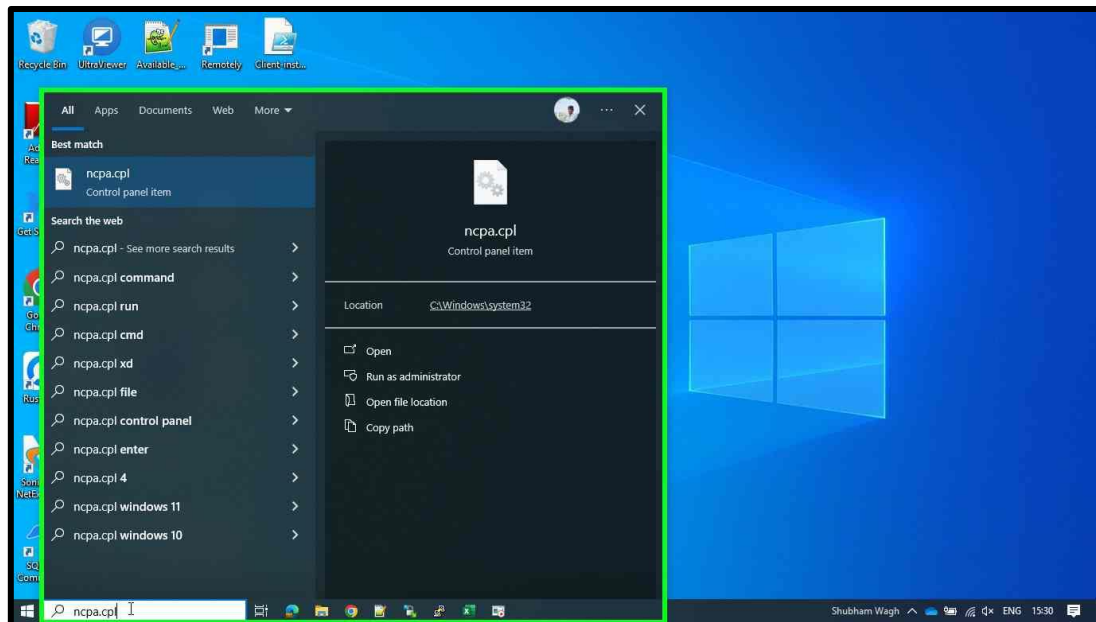
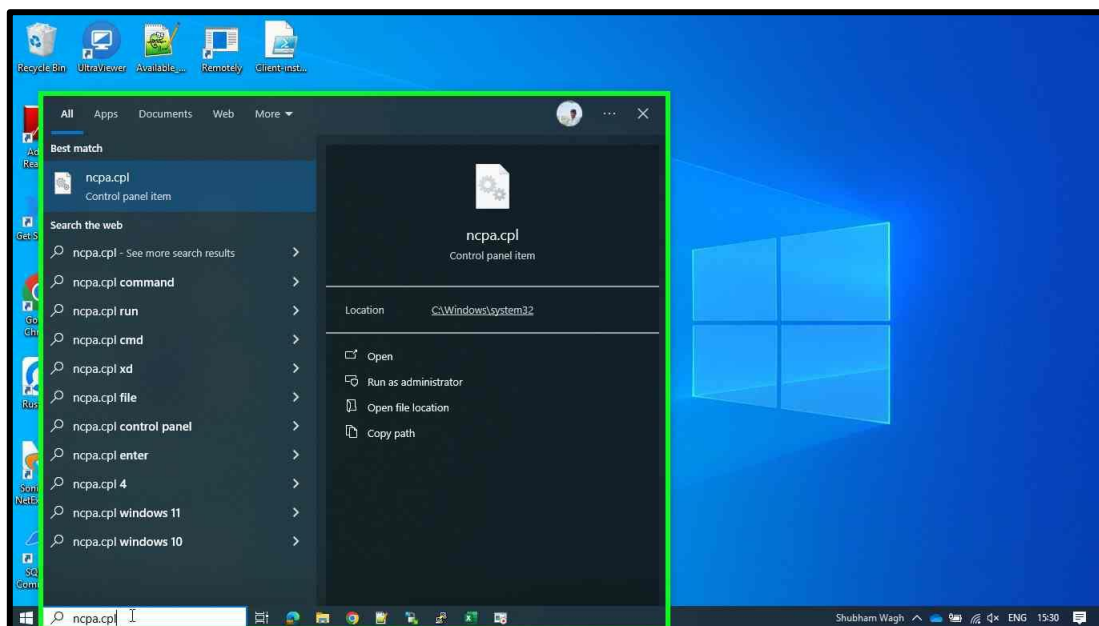


For Wi-Fi Network Connection.

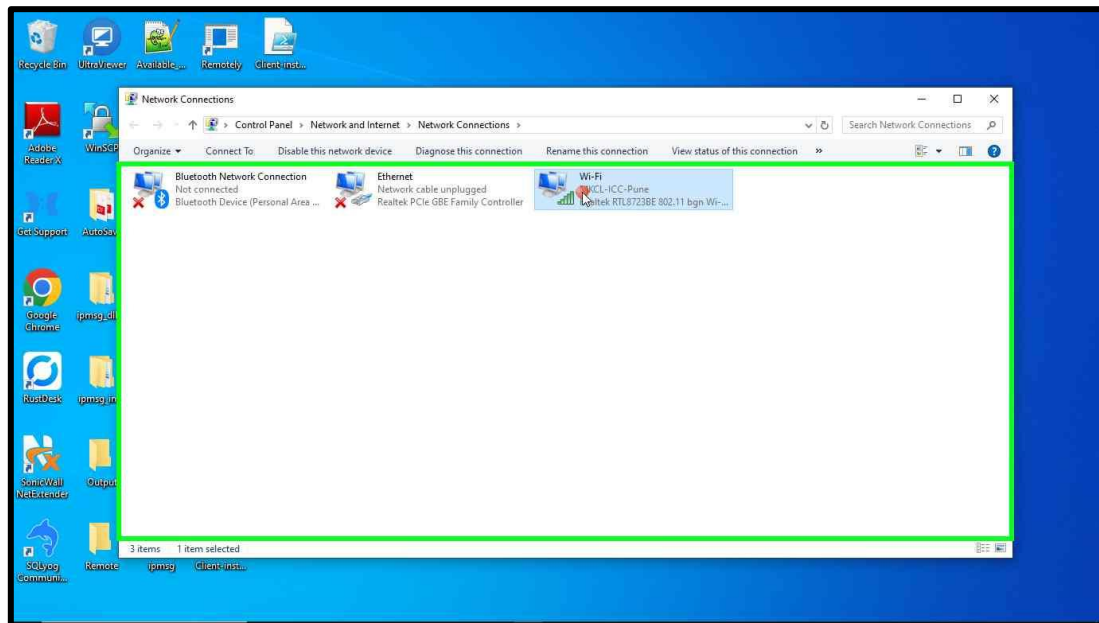
Step 1. Click on **search box** enter the "ncpa.cpl".



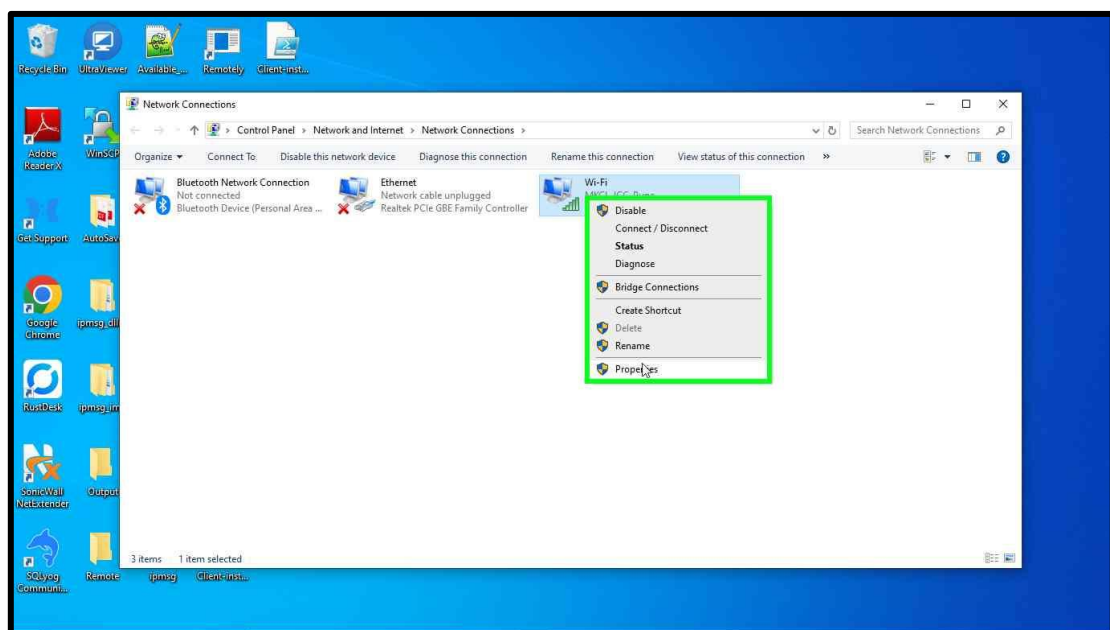
Step 2. Click on **showing file**.



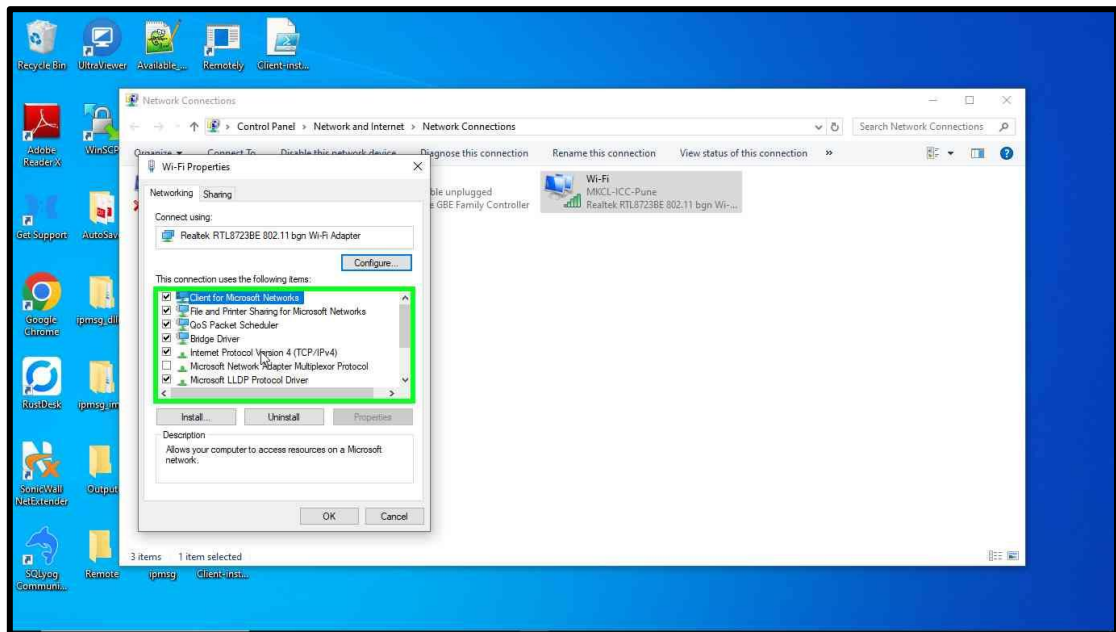
Step 3. After open the file you can show network connections select the **Wi-Fi network** and click on right button of your mouse.



Step 4. Then click on **properties**.

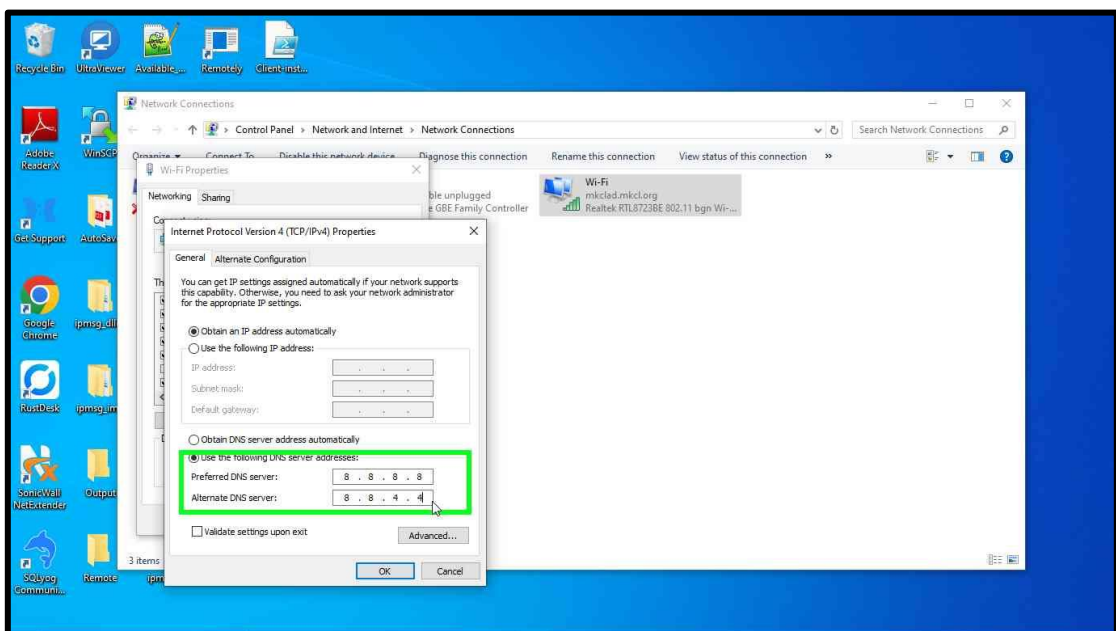


Step 5. Double click on **Internet Protocol Version 4 (TCP/IPv4)** in Wi-Fi properties.



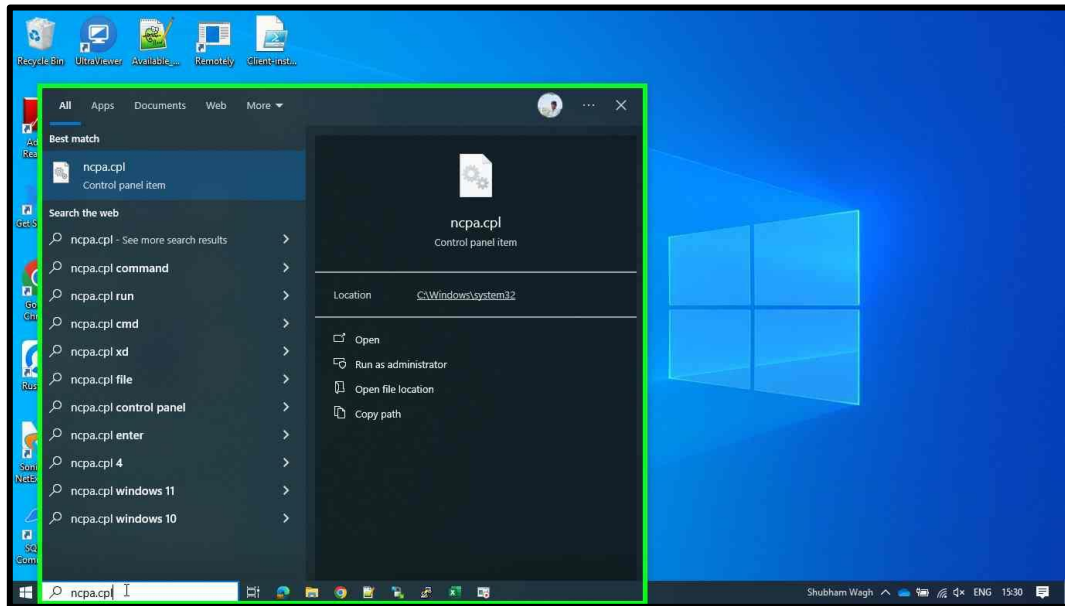
Step 6. Select the **use the following DNS server addresses** in Internet Protocol Version 4 (TCP/IPv4) Properties. Enter the Following server:

1. Preferred DNS server: **8 . 8 . 8 . 8**
2. Alternate DNS server: **8 . 8 . 4 . 4**

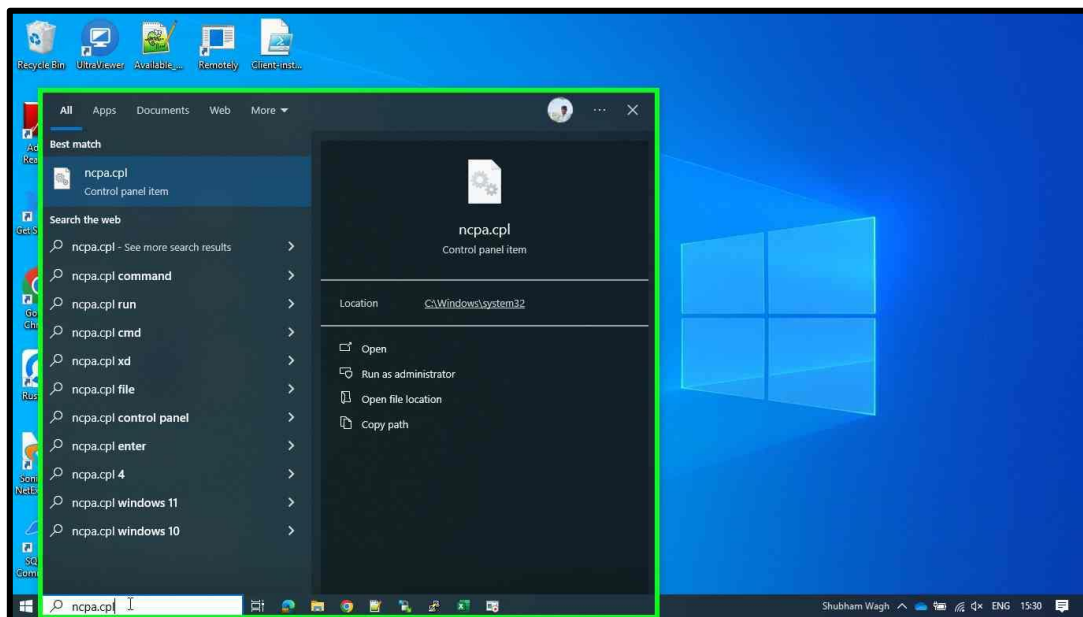


For Ethernet Network Connection.

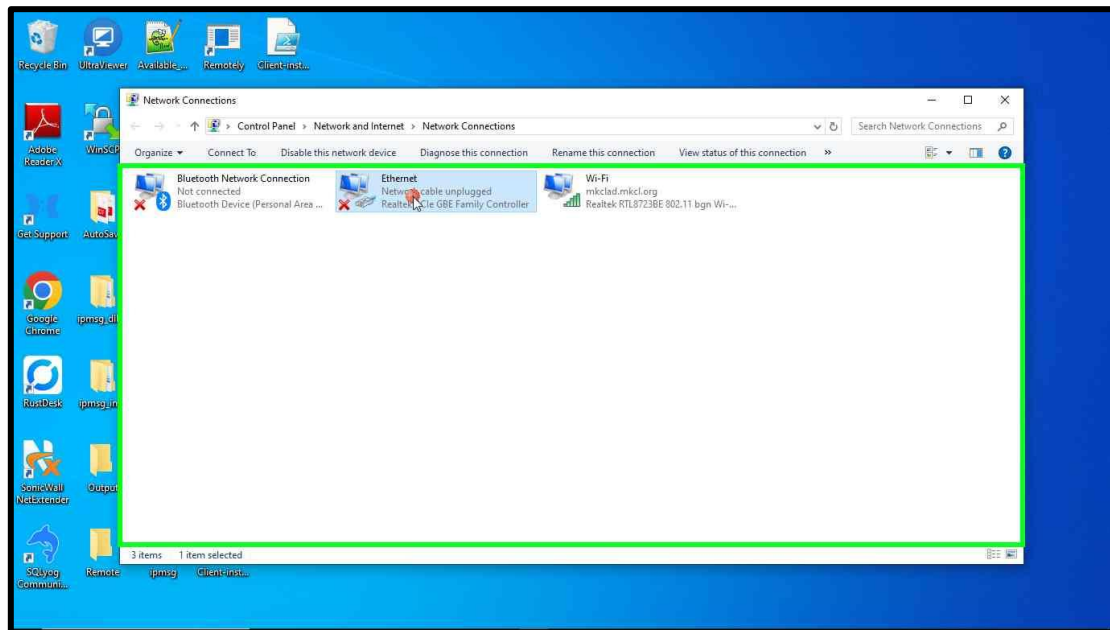
Step 1. Click on **search box** enter the "ncpa.cpl".



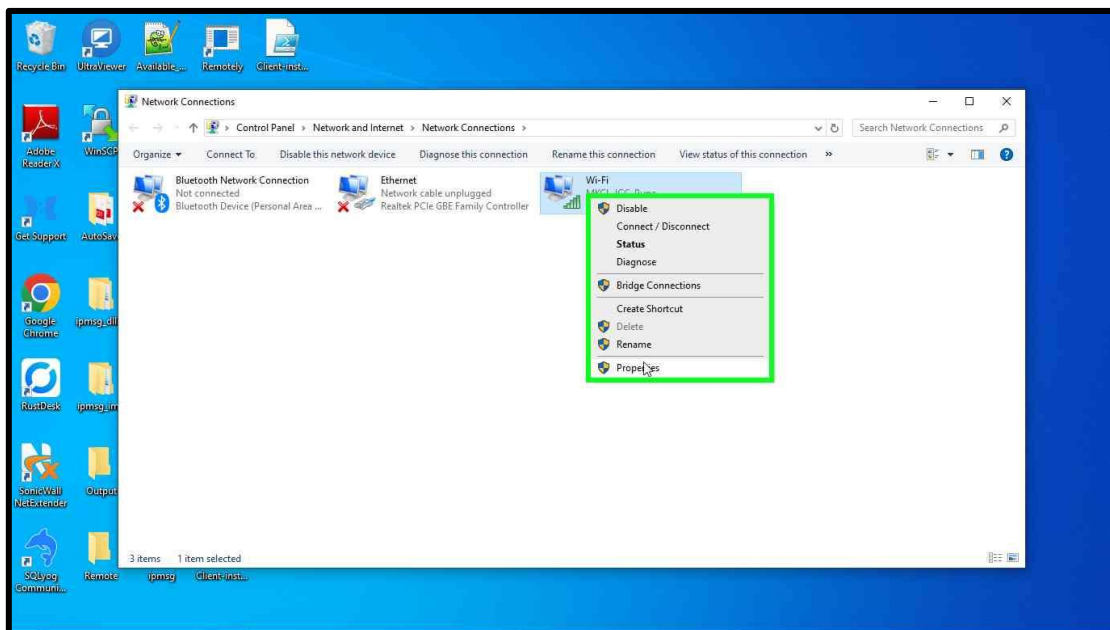
Step 2. Click on **showing file**.



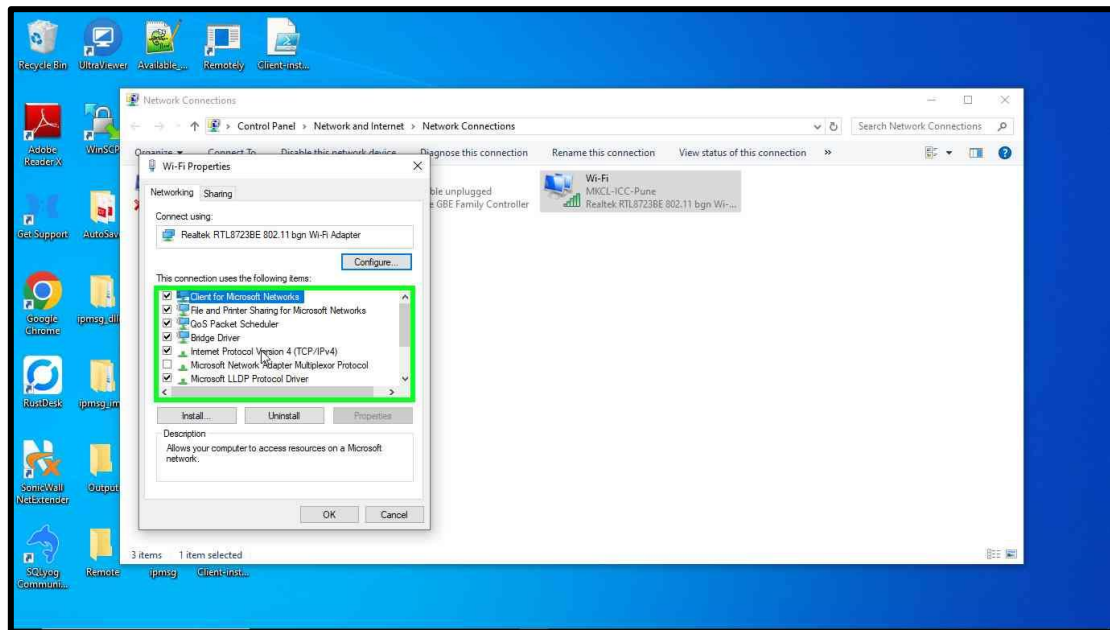
Step 3. After open the file you can show network connections select the **Wi-Fi network** and click on right button of your mouse.



Step 4. Then click on **properties**.



Step 5. Double click on **Internet Protocol Version 4 (TCP/IPv4)** in Wi-Fi properties.



Step 6. Select the **use the following DNS server addresses** in Internet Protocol Version 4 (TCP/IPv4) Properties. Enter the Following server:

1. Preferred DNS server: **8 . 8 . 8 . 8**
2. Alternate DNS server: **8 . 8 . 4 . 4**

