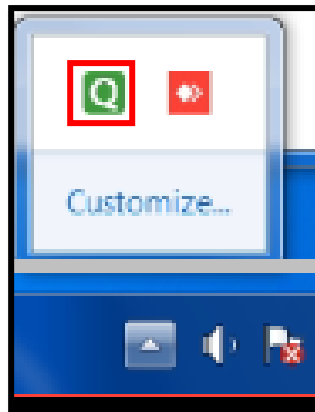


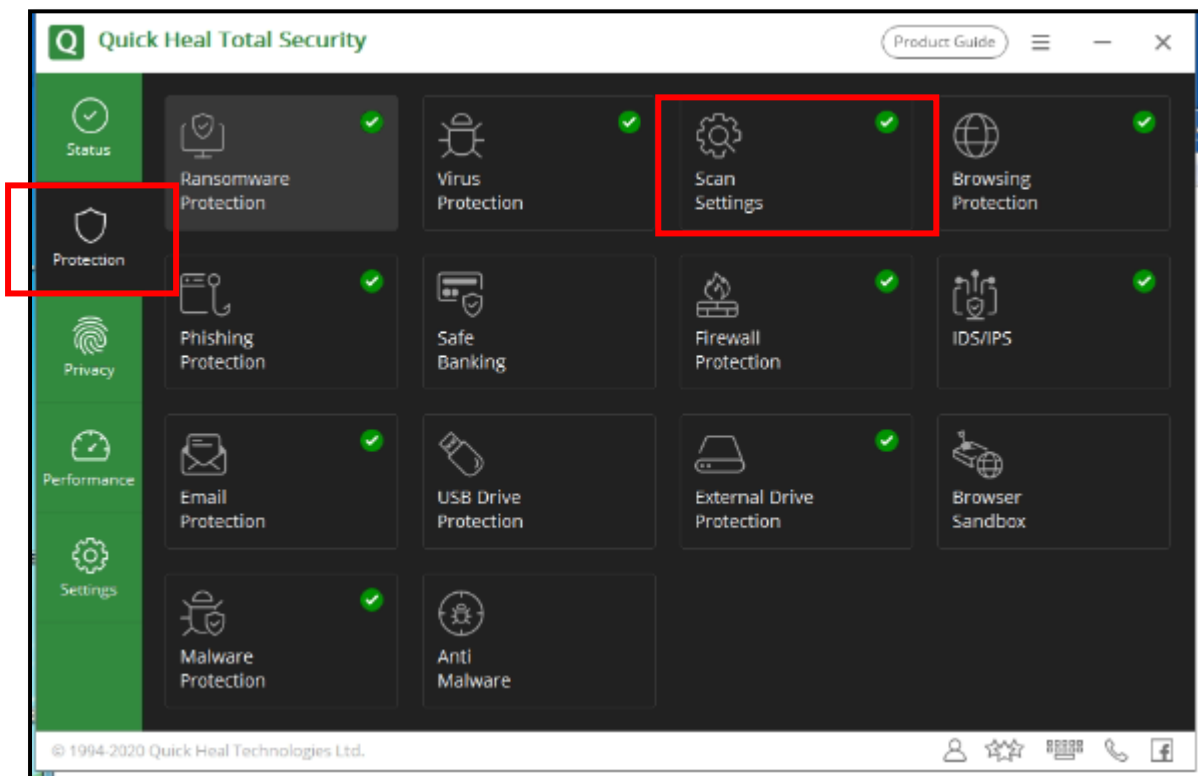
ERA exe Getting Crashed.  
Kindly Follow the below steps to resolve the issue

Open the Quick heal console



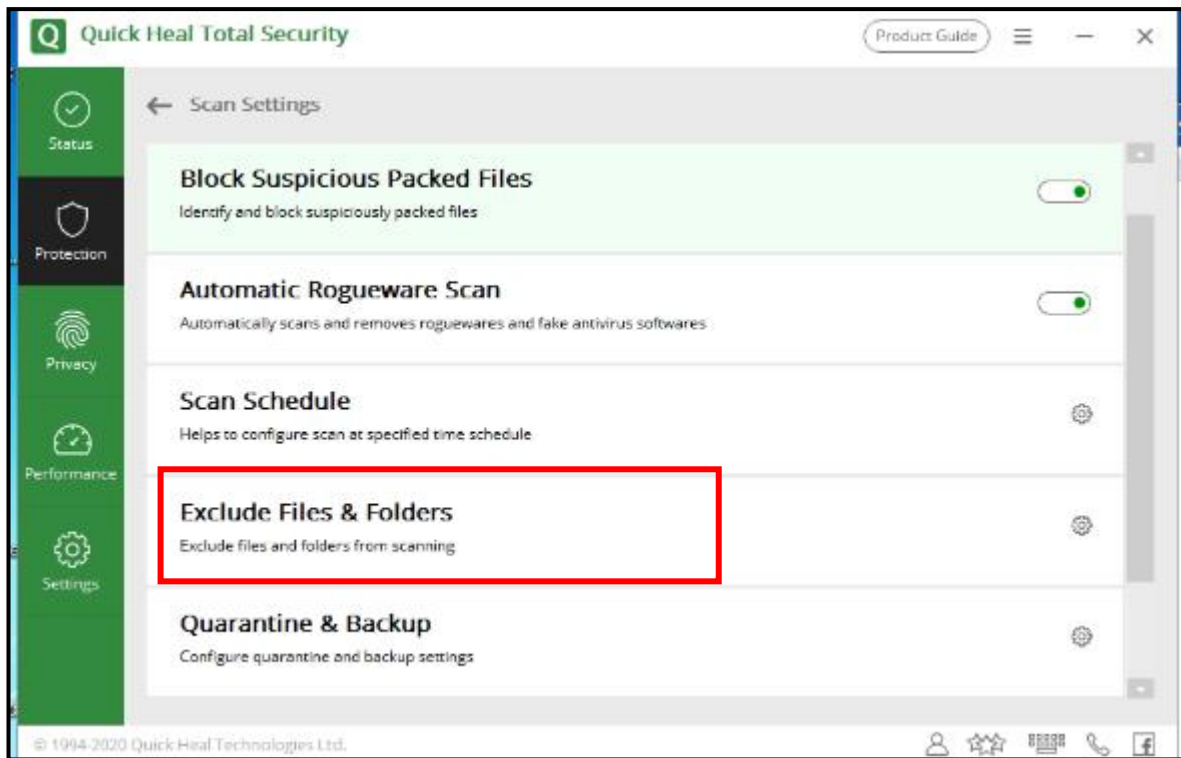
Copy the exe downloader path: - C:\Users\Administrator\Downloads

In the console under the Protection tab, click on Scan Settings.

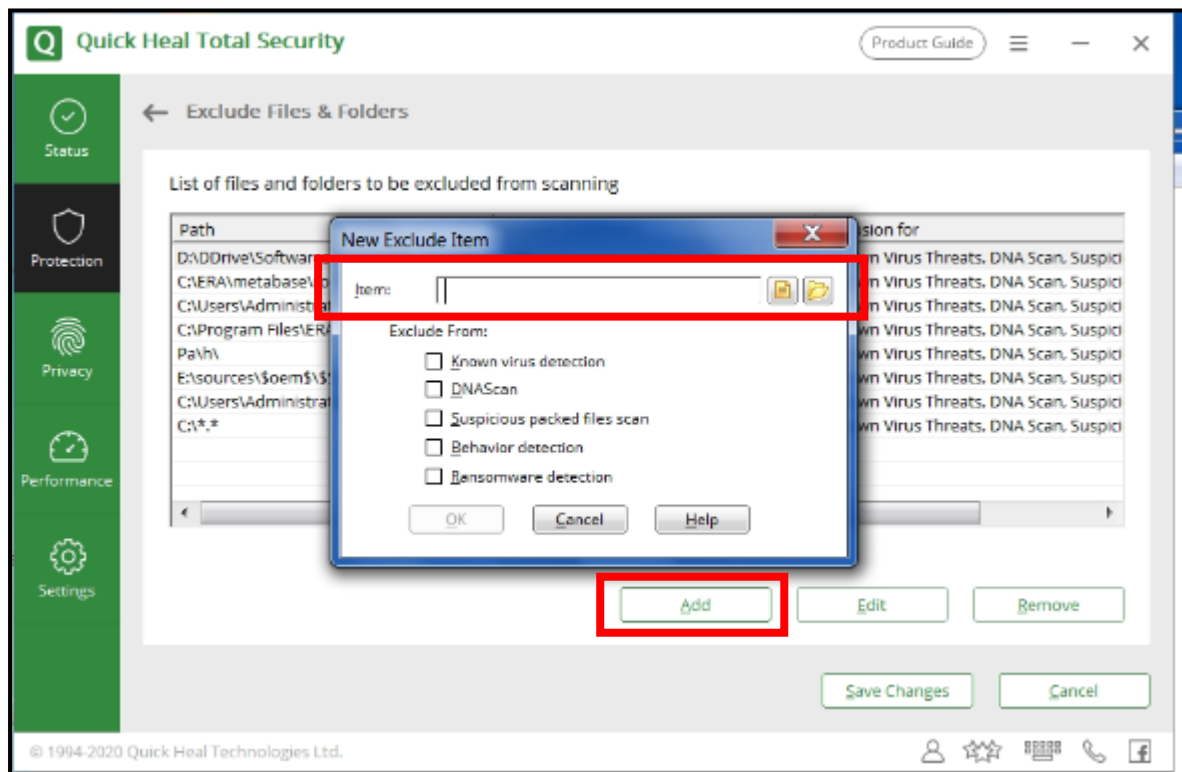


ERA exe Getting Crashed.  
Kindly Follow the below steps to resolve the issue

After that select the Exclude Files & Folders option

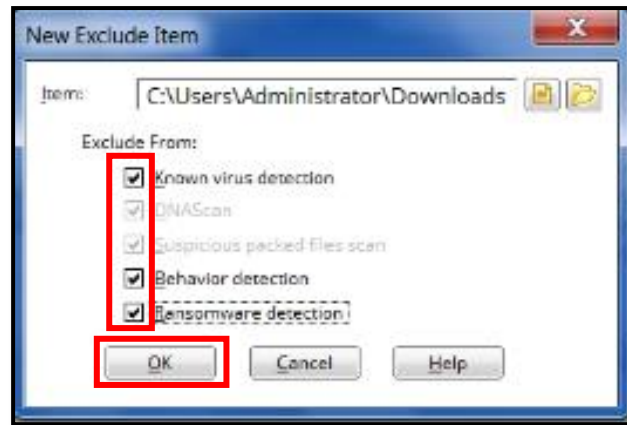


Click on Add, then paste the exe downloader path.

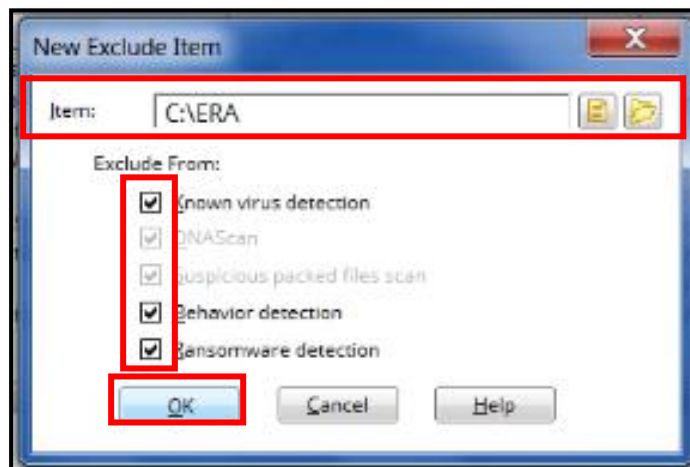


ERA exe Getting Crashed.  
Kindly Follow the below steps to resolve the issue

Select all the checkboxes and click on OK



In a similar manner add the exe server path: - C:\ERA, select all the checkboxes and click on OK



Lastly, click on save changes and execute the exe again.

